

## An environmentally responsible solution with lower total cost of ownership

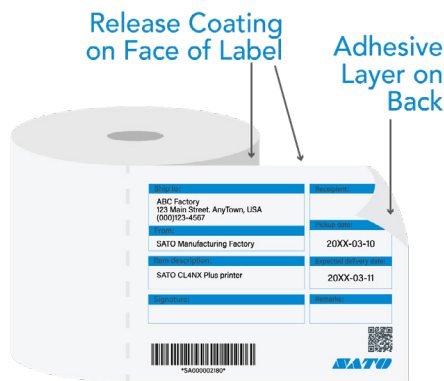
Linerless labels offer multiple benefits to customers. Not only do they provide a greater number of labels per roll (compared to labels with liners) they also have a positive impact in other areas of business operations. Lower waste disposal costs, labour and transportation savings, reduced storage requirements and increased operational efficiency are just some of the advantages, which in turn equates to a lower total cost of ownership.

## Linerless labels are pressure sensitive labels without a release liner

SATO supports its partners in achieving business success through responsible environmental and economic practices. Linerless labels are the perfect choice for businesses who are considering switching to a sustainable, environmentally friendly solution.

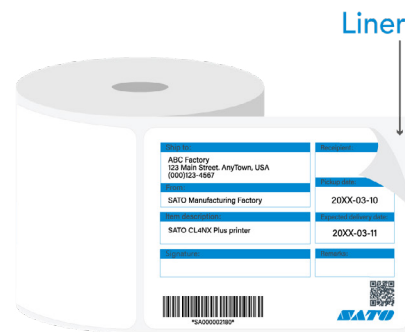
### Benefits of using linerless labels

- More labels per roll - increase of 30-40%
- No liner waste removes the risk of injury through slippage
- Less waste disposal translates to less carbon emission
- Reduced transportation costs
- Supports a lower carbon footprint
- Less storage space required



**LINERLESS LABELS**

VS



**STANDARD LABELS**

## Reduce your carbon footprint with linerless labels

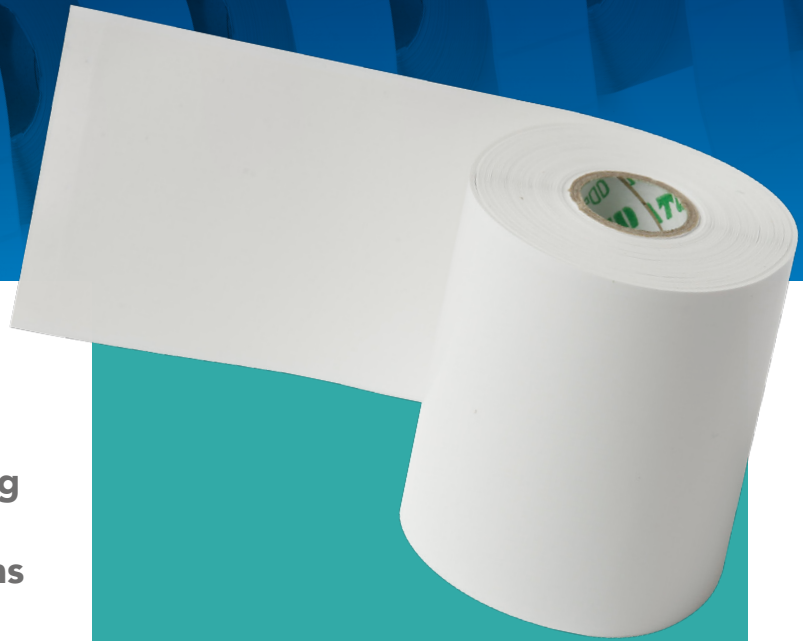
CO<sup>2</sup> Reduction  
**14,664 kg**  
during label manufacturing process

CO<sup>2</sup> Reduction  
**14,988 kg**  
during incineration of liner

Liner waste reduction  
**5,976 kg**

If you are using 12 million standard labels (Length 76mm x Width 102mm) per year and change to linerless label, the benefits are:

Calculation is based on Industrial Waste Disposal Research Report 2007 (Ministry of the Environment Japan) and General Waste Incineration Report (Greenhouse gas emission calculation committee, Ministry of the Environment Japan)



## Key Applications

Linerless labels are available in strong permanent, permanent, removable and semi-permanent adhesive options to suit a wide variety of applications

### For Retailers

Print one or multiple shelf-edge linerless labels at the point of application. Apply accurate labels in a variety of weight-scale applications. In addition, achieve optimum mark-down efficiency by printing on-demand labels with a SATO mobile printer. For secure secondary markdowns, SATO's linerless StripeStik™ is ideal.

### For Healthcare Personnel

Print specimen labels at the point of collection or at the patient's bedside to ensure positive patient and specimen identification, without having to handle liner waste.

### For Field Service Personnel

Improve field service productivity with SATO mobile solution and linerless labels. Confirm work orders, manage maintenance records as well as label and keep track of important documents.

### For Warehouse Operatives

Verify deliveries received to record shipment arrival, re-label shipment on-demand and direct items to the right location using SATO mobile printing solution with linerless labels.

## Recommended Printers

Linerless labels can be printed using the SATO PWNX Series, CT4-LX, FX3-LX and CL4NX Plus printers. Various accessories\* are available for added convenience and comfort, including shoulder straps, swivel belt clips, weather-resistant carrying cases, holsters, single and multiple-unit battery chargers and cables of different lengths.



## Compatible printers quick reference guide:

PW2/4NX	PV3/4	CG2/4	WS2/4-2	CT4-LX	FX3-LX	DR3	TG3	CL4NX+	SG112-ex	S84/6NX
Yes	No	No	No	Yes	Yes	No	No	Yes	No	No

\*The availability of particular products may vary by region. Please check with your local SATO representatives, distributor or SATO channel partner nearest to you.