

illumex® X2/X4 DATABASE

HPTIJ2.5 THERMAL INKJET PRINTER



Our Printers Do More

Engineered for high-speed, high-reliability environments, illumex® printers offer cutting-edge automation tools to simplify workflows, enhance traceability & ensure seamless integration with your production line.



HIGH SPEED
Print upto 200m/min



TRUE PRINT® TECHNOLOGY

Unmatched print quality with NO GAP printing (nonstop) ideal for applications demanding high resolution imagery



HMI & INDUSTRIAL 4.0
Reliable & rapid communication

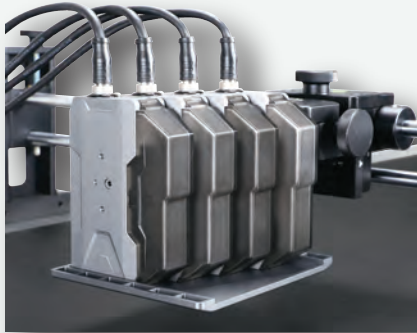


POLYER THERMAL INKJET TECHNOLOGY
Next-generation inkjet printing, powered by polymer resins





Side Mount



Top Mount

Intelligent Thermal Inkjet Automation

At illumex®, we have redefined the possibilities of industrial printing with cutting-edge HPTIJ2.5 thermal technology designed for speed, precision, and reliability.

Whether it's a simple message or complex multi head, multi lane setups, our HP thermal inkjet printers deliver precise, scalable coding & marking across a broad range of industrial packaging applications.

Parameters:

	Parameters	
	DATA X4	DATA X2
Technology	HP TIJ 2.5 Thermal Inkjet Technology - Powered by POLYtj® - TruePrint™	
Resolution	Vertical: 600 dpi - Horizontal: 40-1200 dpi (Single head!)	
Communication Protocol	HTTP - TCP/IP - RS-232 - RS-485 - Modbus (RTU/TCP)	
Screen	10.1 inch - Full Color Touch Display (Capacitive)	7 inch - Full Color Touch Display (Capacitive)
Dimensions	Controller: 281 - 184 - 38 mm	Controller: 224 - 151 - 38 mm
	Printhead: 145 - 91 - 47 mm	Printhead: 145 - 91 - 47 mm
Language	English - Spanish - French - German - Turkish - Chinese - Korean - Russian	
Keyboard	English - Arabic - Spanish - French - German - Chinese - Korean - Russian	
Counter	The printer is equipped with a built-in counter.	
	The counter can be reset for each job or production batch, allowing operators to monitor output and maintain records.	
Printing Height	1-50.8 mm	1-25.4 mm
Printing Speed	Up to Four (4) Printheads - Separated or Combined	
Printing Performance	Up to Two (2) Printheads - Separated or Combined	
Supported Barcodes	Up to 200 metres/minute	
Date Format	Codebar - Code 25 - Code 39 - Code 93 - Code 128 - UPCA - UPCE - EAN - ITF 14	
Interface	QR Code - Data Matrix GS1 - Grid Matrix - Maxicode - PDF 417	
	Create your own fully customisable date formats - Best Before, Use-by, Julian Date, etc	
	4 x 17 pin aviation interface: printhead connection from 1-4	2 x 17 pin aviation interface: printhead connection from 1-2
	Ethernet interface x 1	
	USB interface x 1 (USB flash drive and auxiliary communication equipment available)	
Ink Management	2 x 8 pin aviation interface: connect photocell and encoder	
	1 x 12 pin aviation interface: connect alarm light, RS232, external IO input	
Setup	Original HP cartridges only: Automatically recognises the ink and sets optimal firing parameters, whilst calculating ink consumption	
Environment Requirements	Equipped with side printing and down printing brackets, which can be used for multiple printhead combination installations,	
	Optional: Spring-back mechanism	
Power Input	Operating environment: -10°C - 55 °C ; 10% - 95% RH	
Power Output	Storage environment: -20°C - 70 °C ; 10% - 95% RH	
Certification	100-240V - 50/60Hz - 1.5A - 120VA	
	24V - 4A - 96W	
	CE - FCC - ROHS	

DISTRIBUTOR



Schur Automation a/s
Fuglevangsvej 41, 8700 Horsens
Tel. +45 79 28 29 28
www.schur.com - marking@schur.com